



**Ventex<sup>®</sup>**

TEXTILE ARCHITECTURE



# MEMBRANE MATERIALS FOR FACADE APPLICATIONS

## TEXTILE ARCHITECTURE

Covering facades are medium to large mechanic textiles installations involving fixing a tension profile on a pre-existing supporting framework in order to install on site a manufactured or printed membrane. In this case the pre-existing framework supports the pressure of the canvas.

### BENEFITS

- Competitive price per m<sup>2</sup>
- Aesthetic quality with few connections
- Ideal for printed surfaces
- No visible reinforcements from inside
- Double curvature easy to achieve

### CHARACTERISTICS

- Natural light
- Sophisticated medium for illumination
- Unique shapes
- Taste of exclusivity
- Strong identification
- Large color range
- Fast installation
- Large clear span
- Resistance to harsh environment
- Acoustic absorbers
- Second skin
- Fire behavior
- Eco - friendly products



## UNIQUE DESIGN CONCEPTS

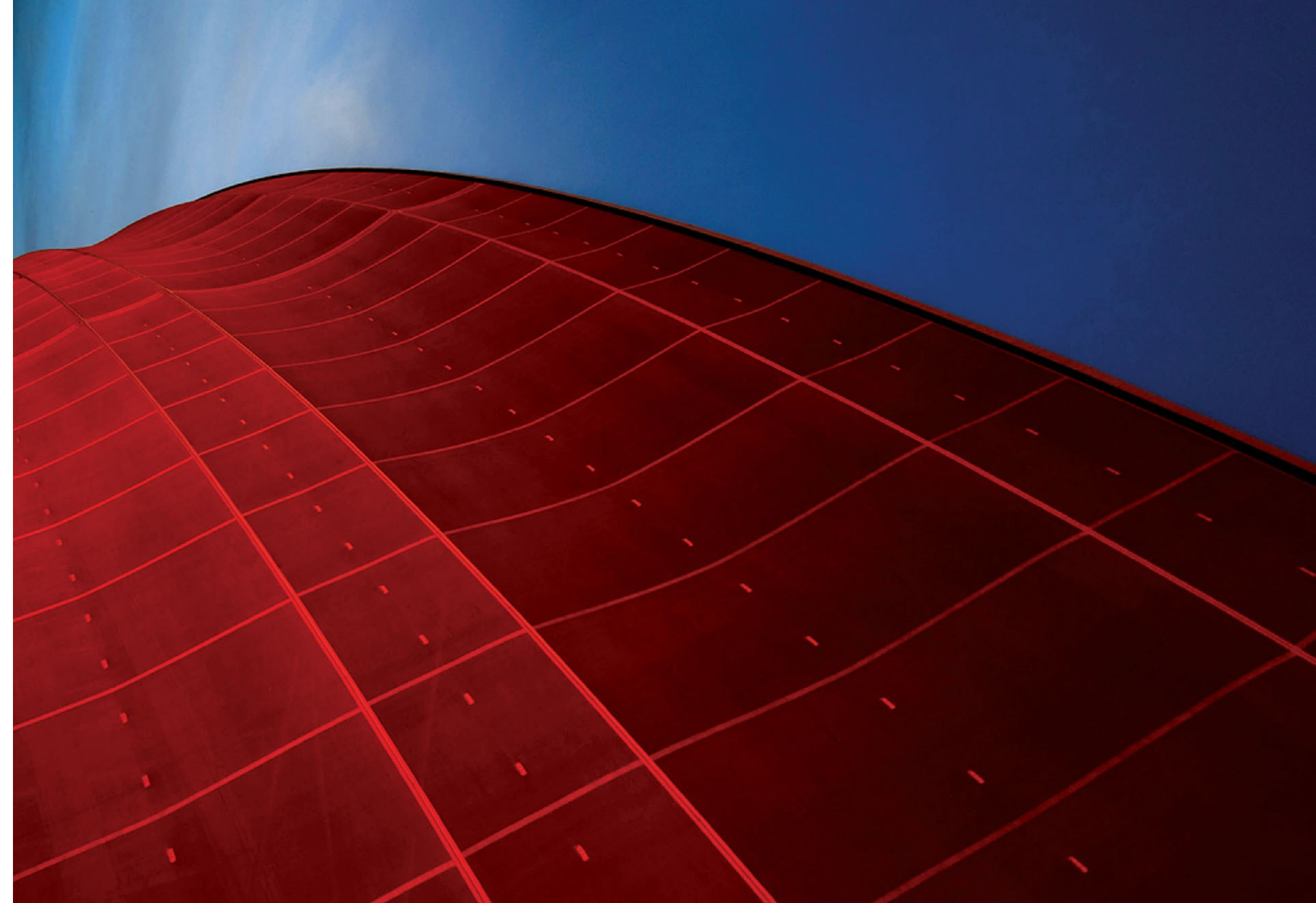
## USES

- Residential
- Corporate
- Hospitality
- Commercial
- Public Places
- Sport Facilities

## FABRIC MATERIALS

- PES / PVC
- Glass / PTFE







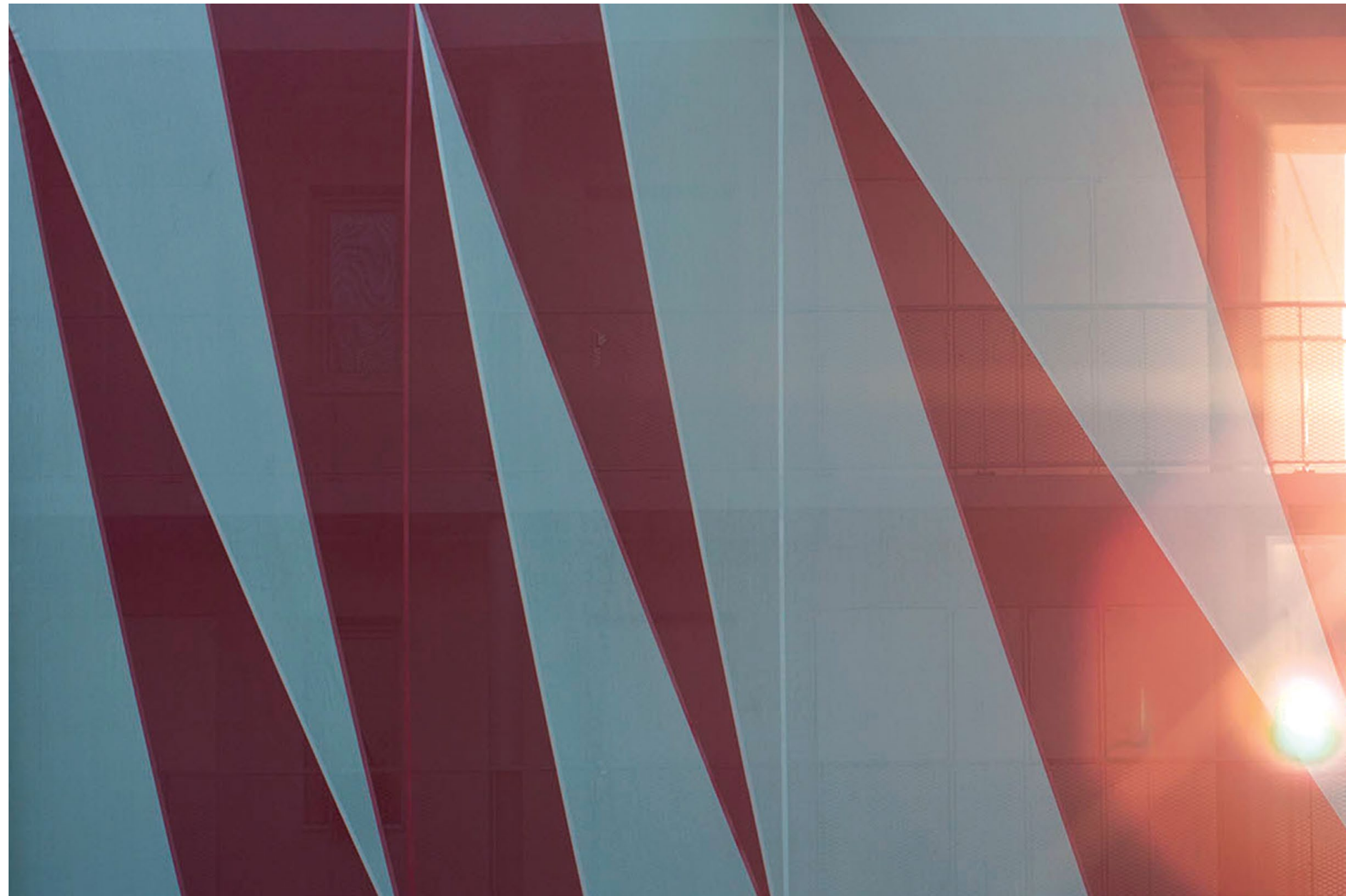


# FACADES

















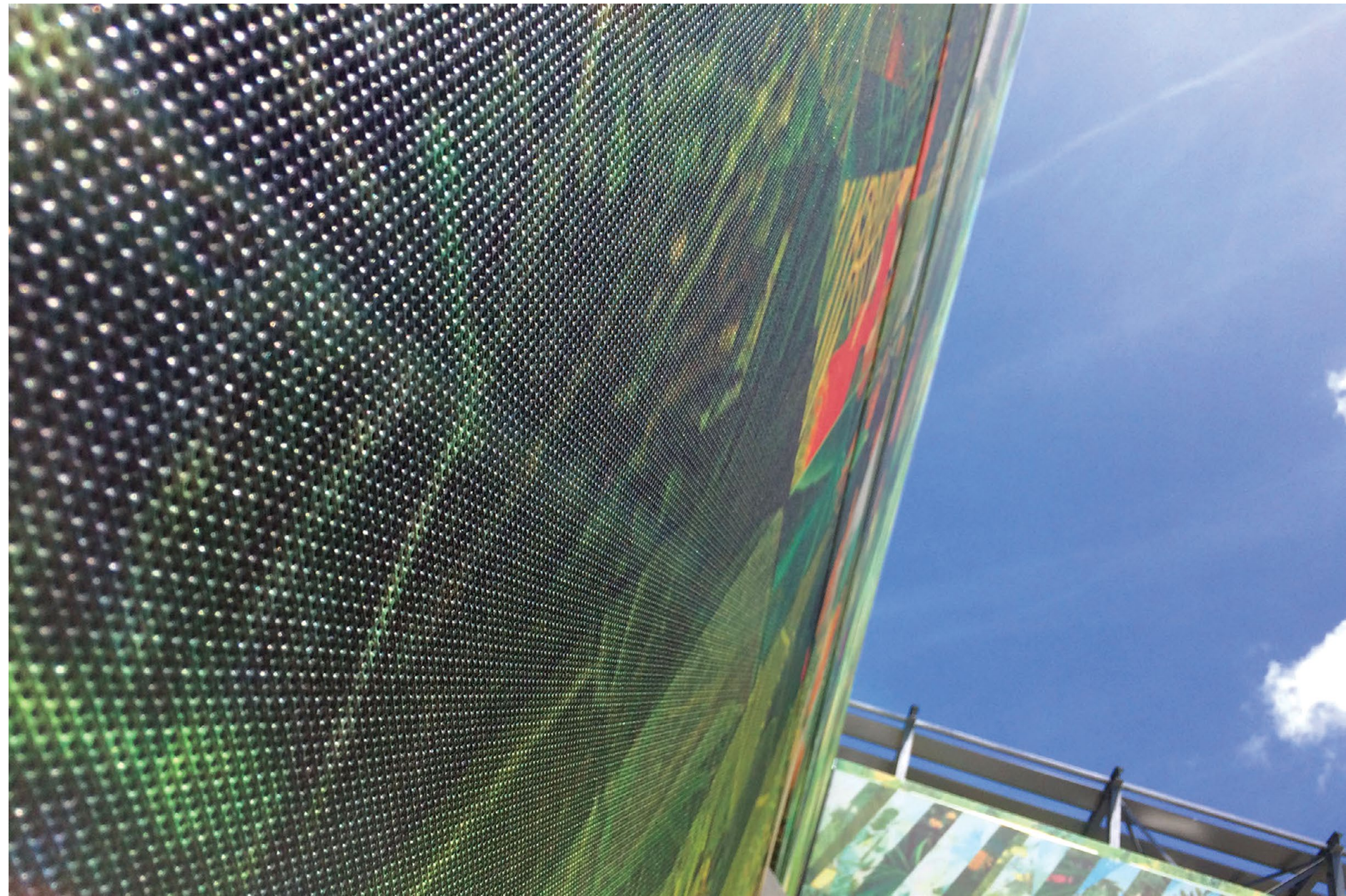














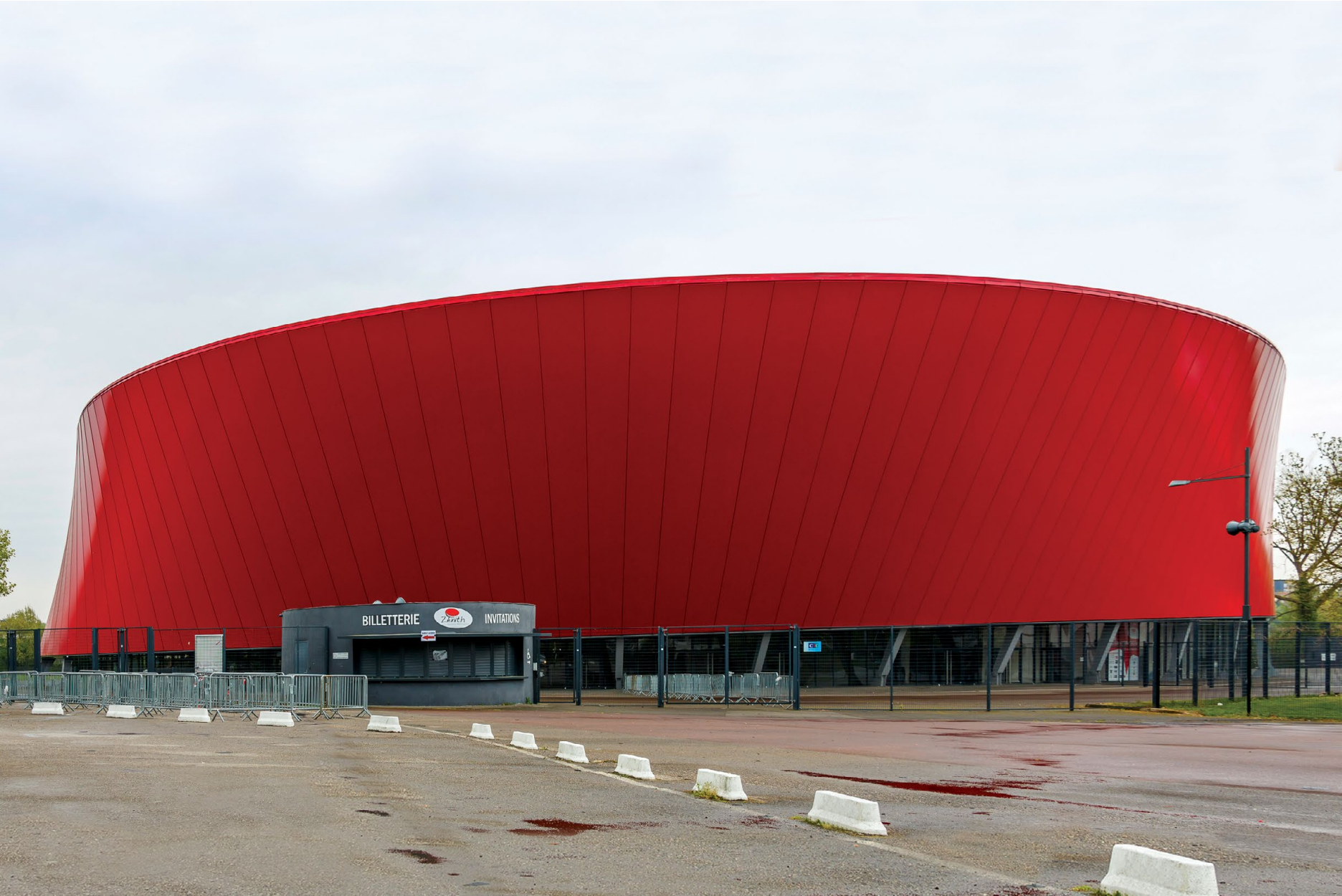


# MEMBRANES

































# **SPORT FACILITIES**





















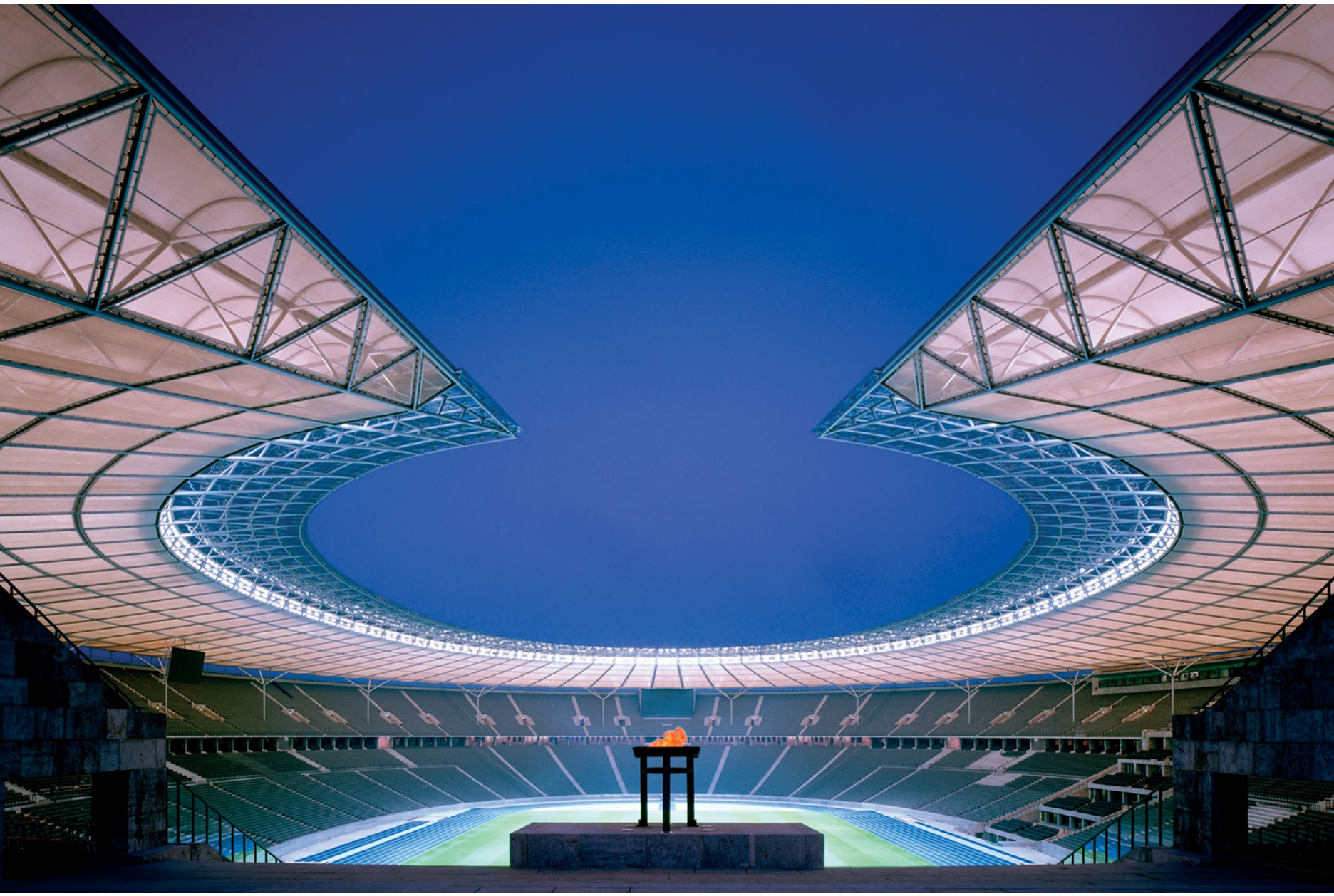














**Ventex.**<sup>®</sup>  
/ [www.ventex1.com](http://www.ventex1.com) /